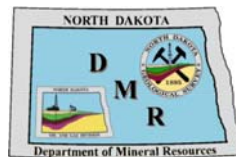




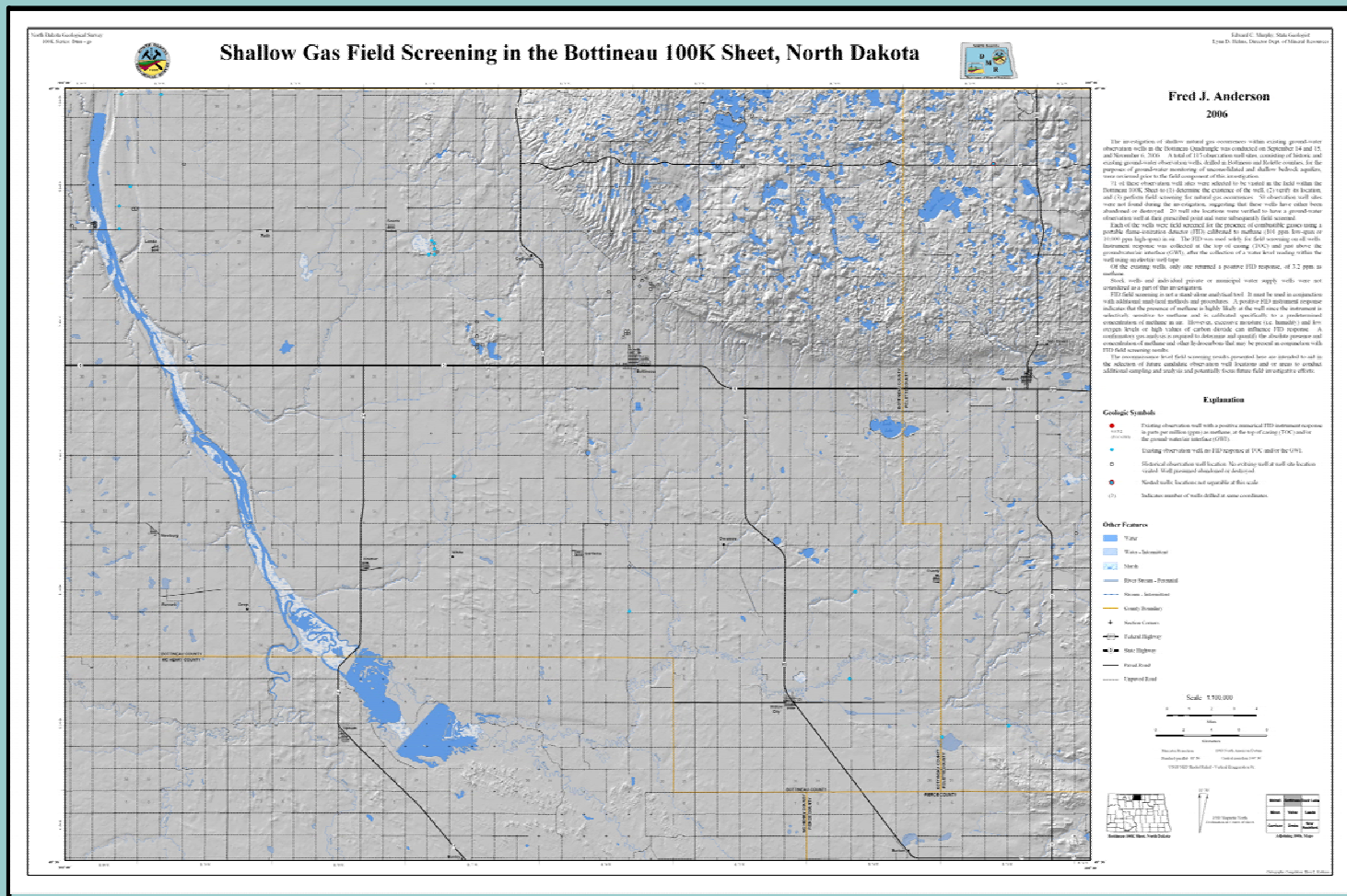
NORTH DAKOTA GEOLOGICAL SURVEY

Geological Information for the State of North Dakota

www.state.nd.us/ndgs



SHALLOW GAS FIELD SCREENING IN THE BOTTINEAU 100K SHEET, NORTH DAKOTA



1:100,000 scale map of shallow gas ground-water observation well field screening results for the Bottineau 30' x 60' quadrangle, North Dakota.

100k Btnu-gs, 1:100,000

The North Dakota Geological Survey has recently completed an investigation into the occurrence of natural gas in shallow ground-water observation wells in Bottineau and Rolette Counties, North Dakota. Over 70 well sites were reviewed and visited during the investigation. Each existing observation well was field screened with a flame-ionization detector (FID) for the presence of methane. The locations of the existing observation wells in place within the Bottineau 30' x 60' Quadrangle are depicted along with the associated FID instrument response.

Key Contact: Fred J. Anderson, Geologist
North Dakota Geological Survey
(701) 328-8013
fjanderson@nd.gov

Office Location: North Dakota Geological Survey
1016 East Calgary Ave.
Bismarck, ND 58503
(701) 328-8000